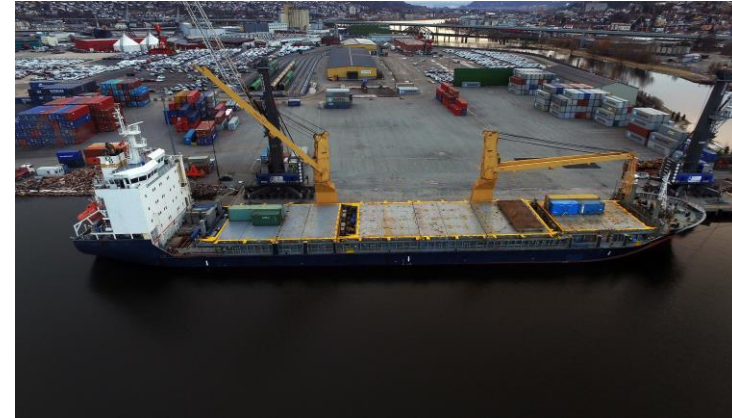




Lydia



General Info:

Built: 2004
Flag: Panama
Class: DNV-GL
P&I: Gard

Tonnage/Dimensions:

Dwt: 12.717t
GT/NT: 9.611 / 4.260
LOA: 138,93m
Beam: 21m
Draft: 8,0m fully laden

Speed / Consumption:

Abt 13kts on abt 19ts IFO 380*
Abt 14kts on abt 21ts IFO 380*
In port: abt 2t/3.5t MGO idle / cranes working

*Above parameters, given in good faith, without guarantee and based in good weather conditions whilst vessels is on even keel, maximum Force 3 in Beaufort scale and sea-state 2 in Douglas scale. No negative currents, swells or tidal streams, and in temperate waters

Cranes:

2 x 120ts – Combinable 240ts

Holds:

Total capacity Grain / Bale: 563.374cb.ft

Hold 1: 95.395cb.ft

Hold 2: 295.308cb.ft

Hold 3: 172.671cb.ft

Tween Decks:

Full tweendeck, adjustable to two heights, turnable and can be used as bulkheads

Hold Dimensions:

Hold 1: 18,75 x 15,1 x 10,53m narrowing fwd to 10,1m beam

Hold 2: 42,0 x 17,5 x 11,18m

Hold 3: 25,5 x 17,5 x 10,77m

Dangerous Goods: In accordance with IMDG certificate

Hatches:

Hydraulic folding hatches

SQM:

Tanktop:	1.424sqm
Tweendeck:	1.433sqm
Weatherdeck:	1.462sqm
Total:	4.319sqm

Aussie fitted: Yes

USA Fitted: No

St Lawrence fitted: Yes

Co2 – Smoke detector fitted: Yes

Bow Thruster: Yes – 500KW